

SIMBA Image Management and Analysis System Quickstart

Anthony P. Reeves Ph D

The image management and analysis system provides support for a variety of web-based image applications. Applications are categorized into four broad areas:

1. Research projects including observer studies
2. Clinical Studies
3. Interactive teaching environment
4. Public image database

This quickstart is directed at the first of these; however, the general format for all applications is the same. For a Public image database, you set up your own account and you may go directly to the URL to access the account; for other account types you will need access information as outlined below

1. System Access

Computer requirements for system use are (a) a network-enabled computer with an up-to-date web browser and (b), for image viewing and annotation, an up-to-date java plugin.

To log onto a specific project from a web browser you will need to know four items of information:

1. The URL of the system
2. The name of the project
3. The project passkey
4. Your personal passkey

In addition, if the URL does not specify the area of the application you will need to know the projects program. An unqualified program only URL will provide you with a login screen similar to that shown in Figure 1.

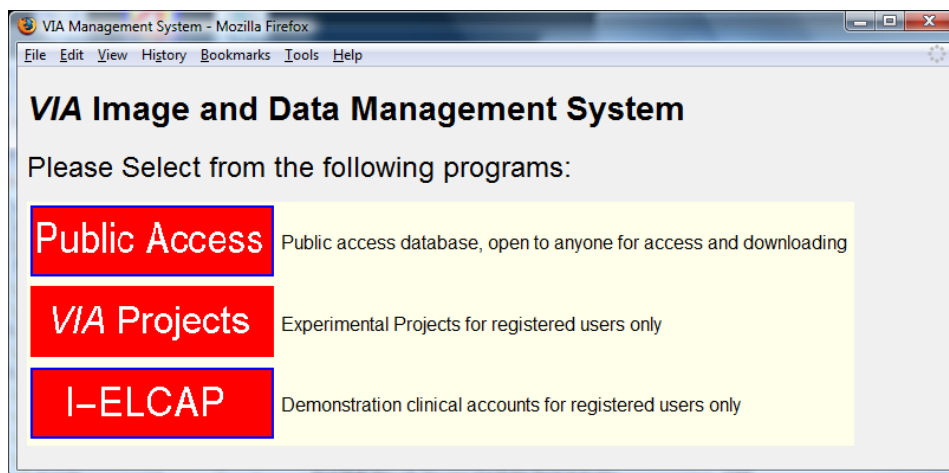


Figure 1. All program system webpage

Select a program by clicking on the program icon. For example, clicking on Via Projects would take you to the program login page shown in Figure 2. Alternatively, the URL may include the program qualifier and may take you to this page directly without showing the page in Figure 1.

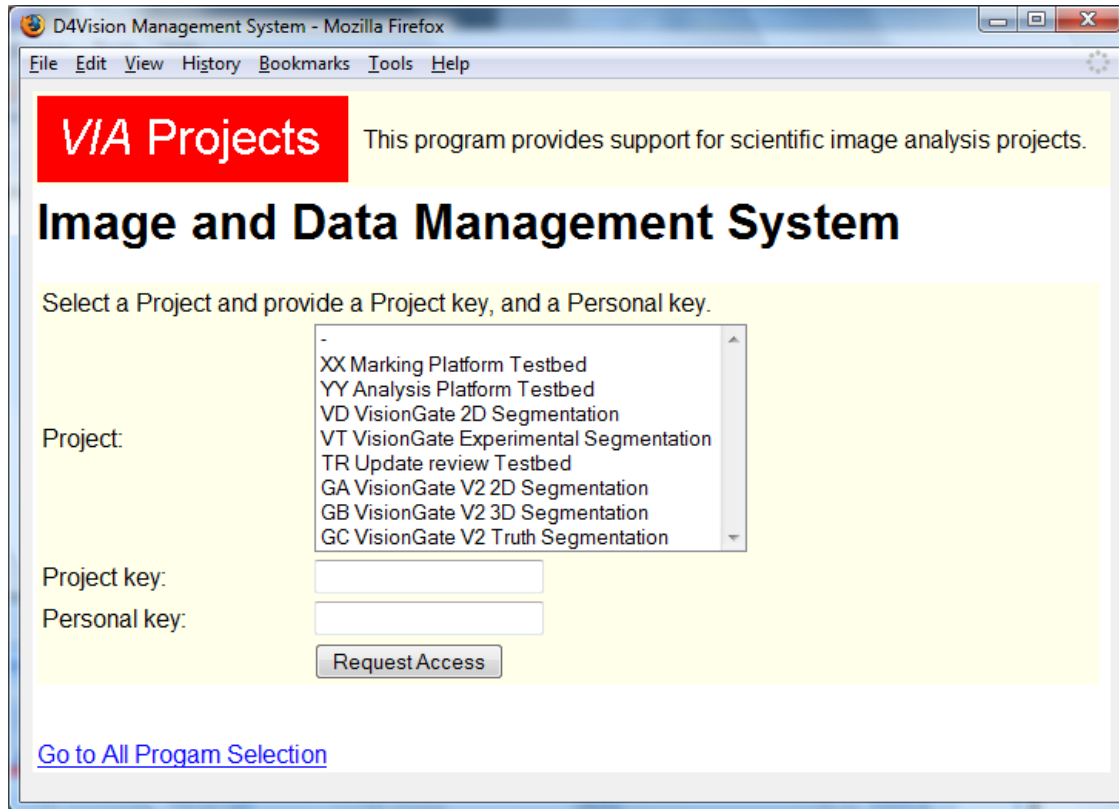


Figure 2. Program qualified log on page

In general you will be provided with the four items listed above before you can gain access to the system. One exception to this is the public database accounts. For these you do not need a project passkey and you can request directly from the login page a personal passkey which will be sent to you by email.

To access the system, click on the name of the project, enter the project passkey and your personal passkey and click on "Request Access". This completes the logon process and, on successful logon, you will be presented with the project home page.

You should never share your personal passkey with others; only one session can be open at a time for each personal passkey.

2. Project Home page

Projects may have individual customized home pages; however most projects use the generic home page which is shown in Figure 3., or a variation of that home page.

The screenshot shows the VIA Management System home page in a Mozilla Firefox browser window. The page is titled "TR Update review Testbed Home" and includes a "Welcome." message. Below the welcome message is a section titled "new home testbed" with the text "This is an experiment validation account". The main content area is divided into several sections:

- Image Management System:** Contains buttons for "View All Cases", "View Project Reports", "Project Documentation", and "User Preferences".
- Case Review and Data Entry:** Features a search form with fields for "Case ID", "Description", and "Record No.", each with a "Go" button. It also includes buttons for "View all Cases", "Create New Case", "Administration", and "User Preferences".
- Data Analysis and Project Information:** Contains buttons for "View Reports" and "Project Documentation".
- General Information and Messaging:** Includes buttons for "View Messages", "Create New Message", and "Log Off".
- Security:** Contains buttons for "Change Password" and "Log Off".

On the left side, there is a sidebar with the VIA logo and the text "Vision and Image Analysis Group". Below the logo is a section titled "Image Viewing" with a numbered list of instructions. At the bottom, there is a section titled "Boundary Marking" with a numbered list of instructions. The page also includes several "Help" buttons throughout.

Callouts on the right side of the image point to the following components:

- Project Title
- System Message
- Project Specific Information
- Main Menu Buttons
- Detailed Control Panel
- Case Selection
- Case management (if permitted)
- Project Options
- Password Management
- System Help Information
- Boundary Marking Help (optional)

Figure 3. Generic Home Page

The home page provides access to the system features and also includes yellow help buttons that provide on line access to instructions for using the system. Therefore, for most projects, no additional information is needed beyond access to the home page. An exception to this is the clinical studies program in which formal training should be undertaken before using the system.

The generic home page, illustrated in Figure 3, contains the following:

1. Project Title: The top of the page includes the project title and the page function name for all pages in the system
2. The system message: This is the message response from the last action that was performed by the system. In Figure 3, "Welcome" so the response from a correct log on.
3. Project Specific Information: Projects are customizable, if a project contains additional capabilities or requires additional actions this is outlined in this section.
4. Main menu buttons: This menu contains the main actions that are typically performed including project documentation an result analysis when the they have been added by project customization.
5. Detailed Control Panel: This panel, located to the right of the main menu, provides access to the main system features.
6. Case Selection: is accomplished from the control panel. There are several search and selection functions that facilitate the access to both case subsets and individual cases.
7. Project Options: this section of the control panel provides buttons to optional customized features of the project.
8. Password management: provides for changing your personal passkey and to logging off the system.
9. System help: This menu provides links to help information for some of the main system activities.
10. Boundary Marking Help

At this time there is no other user's manual for the system beyond this quickstart document. All user information for the main system functions and for a specific project is accessible on-line from the project home page. In addition, further information on specific activities is often provided by yellow help buttons located on that activities page.